



Established 1925

KANSAS GEOLOGICAL SOCIETY

BULLETIN

Volume 86 Number 3

May—June 2011

IN THIS ISSUE

*Complimentary Issue
Kansas Geological
Foundation's Cornerstone
Inside*

GEO-SCENES

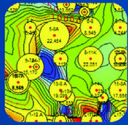
**WSU Geology Spring Break Trip
To Ouachita &
Appalachian Mountains of
Arkansas & Tennessee**



Get Ahead of the Game



Directional Survey Plus



Production Data



Digital Well Logs



With High Quality Well Data From TGS

Need an extra edge on the competition? TGS' high quality well data, comprehensive coverage and dedicated customer support can get you to the finish line.



Directional Survey Plus

Beyond simple directional survey data capture, Directional Survey Plus data are thoroughly researched, reprocessed and standardized.



US Production Data

TGS' nationwide production database features a visualization tool, leading industry exports and daily incremental updates.



Complete Curve LAS

Over 500,000 LAS well logs are now available in North America. Over six million well logs available in 30+ countries worldwide.

Find out more at www.tgsnopec.com/welldata or contact TGS Well Data at 888-LOG-LINE or WellData@tgsnopec.com



Geophysical
Products



Geological
Products



Imaging
Services



www.tgsnopec.com

Table of Contents

Features: Geo-scenes21

Departments & Columns:

KGS Tech Talks	4
President's Letter	7
Advertiser's Directory	8
From the Manager.....	9
KGS Board Minutes	16
Professional Directory	23 & 24
Exploration Highlights	26
Kansas Geological Foundation	28
KGF Memorials.....	30

ON THE COVER:

The intrepid members of the Wichita State Geology student group after a climb to Chimney Rocks in the Great Smoky Mountains National Park on their Spring Break field trip to Arkansas & Tennessee, led by Dr. Will Parcell. More photos and information on pages 21 & 22.

CALL FOR PAPERS

The Kansas Geological Society Bulletin, which is published bimonthly both in hard-copy and electronic format, seeks short papers dealing with any aspect of Kansas geology, including petroleum geology, studies of producing oil or gas fields, and outcrop or conceptual studies. Maximum printed length of papers is 5 pages as they appear in the Bulletin, including text, references, figures and/or tables, and figure/table captions. Inquiries regarding manuscripts should be sent to Technical Editor Dr. Sal Mazzullo at salvatore.mazzullo@wichita.edu, whose mailing address is Department of Geology, Wichita State University, Wichita, Kansas 67260. Specific guidelines for manuscript submission appear in each issue of the Bulletin, which can also be accessed on-line at the Kansas Geological Society web site at <http://www.kgslibrary.com>

SOCIETY Technical Meetings

Spring 2011 Schedule

May 3—Alan DeGood, et al: Panel Discussion on Horizontal Drilling

May 9—Brian Wilhite, Sal Mazzullo, Beau Morris, Darwin Boardman: “Evidence for early Mississippian forebulge tectonics in the Mid-Continent based on outcrop studies; implications and considerations for subsurface Mississippian exploration”

May 17—Kevin Evans, “Pre-Mississippian Tectonism on the Southern Margin of the Ozark Dome”

May 24—Larry Richardson’s Wichita State Class

**There are no technical meetings scheduled for the summer months.
We will reconvene in September**



Photo taken at the February 22 technical talk featuring Brian Cardott of the Oklahoma Survey speaking on the Hartshorne Coal Rank Applied to Arkoma Basin Coalbed-methane Activity in Oklahoma.

Location for Technical Meetings

*All KGS technical presentations are held at 12:30 p.m. at the **Wichita Bar Association**, located at **225 N. Market**, ground floor conference room, unless otherwise noted.*

Note: For those geologists who need 30 points to renew their licenses, there will be a sign-in sheet at each presentation and also a certificate of attendance.



BOARD OF DIRECTORS

PRESIDENT

Doug V. Davis

SECRETARY

Rocky Milford

DIRECTORS

Ken Dean
Rick Saenger
Ryan Dixon

PRESIDENT-ELECT

Kent Scribner

TREASURER

Marjorie Noel

ADVISORS

Don Beauchamp
Alan DeGood

COMMITTEE CHAIRMEN

Advertising

Kent Scribner

Advisory

Don Beauchamp
Alan DeGood

Annual Banquet

Bob Bayer

Budget Committee

Marjorie Noel

Bulletin

Sal Mazzullo

Continuing Education

Robert Cowdery

Distinguished Awards

Rick Saenger

Directory

Larry Richardson

Environmental

Kent Matson

Field Trip

Larry Skelton

Fishing Tournament

Randy Teter

Future Plans

Ernie Morrison

Golf

David Barker

Historian

Larry Skelton

Investment

Marjorie Noel

Library

Roger Martin

Membership

Ted Jochems

Nomenclature

Larry Friend

Picnic

John H. Morrison, III

Public Relations

Marjorie Crane-Noel

Shooting Tournament

Robert Cowdery

Technical Program

Larry Richardson

Ticket Sales

Robert Cowdery

Bill Shepherd

A.A.P.G. DELEGATES

Ernie Morrison	Robert Cowdery	Doug Davis
2013	2012	2012

BULLETIN STAFF

EDITOR

Sal Mazzullo
salvatore.mazzullo@wichita.edu (316) 978-7211

ADVERTISING

Kent Scribner
Stelbar Oil Corp. (316) 264-8378

PROFILES/MEMORIALS

Robert D. Cowdery
Consultant (316) 267-9030

EXPLORATION HIGHLIGHTS

John H. Morrison, III
Independent O&G (316) 263-8281

STATE SURVEY

Rex Buchanan
KS Geological Survey (785) 864-3965

SOCIETY NEWS

KGS Library (316) 265-8676

EDITOR EMERITUS

Wes Hansen (316) 863-7313

K.G.S. LIBRARY

PHONE 316-265-8676 FAX 316-265-1013

email: frontdesk@kgslibrary.com or

Web: www.kgslibrary.com

LIBRARY MANAGER

Rebecca Radford 265-8676

manager@kgslibrary.com

The KGS *Bulletin* is published bi-monthly by the Kansas Geological Society, with offices at 212 North Market, Wichita, Kansas 67202 Copyright 2010, The Kansas Geological Society. The purpose of the *Bulletin* is to keep members informed of the activities of the Society and to encourage the exchange and dissemination of technical information related to the Geological profession. Subscription to the *Bulletin* is by membership in the Kansas Geological Society. Limited permission is hereby given by the KGS to photocopy any material appearing in the KGS *BULLETIN* for the non-commercial purpose of scientific or educational advancement. The KGS, a scientific society, neither adopts nor supports positions of advocacy, we provide this and other forums for the presentation of diverse opinions and positions. Opinions presented in these publications do not reflect official positions of the Society.

TRILOBITE TESTING INC

Eleven Trucks Serving
Kansas - Colorado - Texas
Nebraska - Illinois

Slickline services using the same
Alpine Electronic Pressure
Guages as used on DST's

Back pressure testing (G1 & G2)
DST's

1-800-728-5369

FAX: 1-785-625-5620
trilobite @eaglecom.net

SHOPS LOCATED IN:

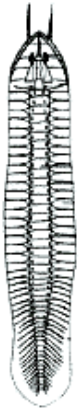
Hays, KS

Scott City, KS

Pratt, KS

Hugoton, KS

Clay City, IL



CAN YOU NAME THE CRITTER?

Sponsored by Trilobite Testing, Inc.

Is your paleo up to date?

If you know the name of the trilobite,
submit your guess via e-mail to
manager@kgslibrary.com

Remember that *Trilobite Testing* is
sponsoring your efforts, so be sure to thank
Paul Simpson the next time you see him.

The last trilobite was correctly identified by

Kris Wells

Mustang Fuel Corp.

Carolinites genacina

**Bulletin committee members and PhD's in
Paleontology are prohibited from entering.**

Friday, June 24th

KGS Annual Golf Tournament Hidden Lakes Golf Course Derby, Kansas



\$70.00 Entry Fee

**50" Plasma TV will be given away
Plus Many Cash Prizes**

**See inserted flyer for registration
On-line See EVENTS Tab**



President's Letter

Dear Members,

The first thing I would like to say is thanks to all those customers of the KGS Library and the Walters' Digital Library. As of April 1 the profits for the first quarter were just over \$59,000. Please keep up the spending!!!

I would like to encourage everyone to attend the Kansas Geological Foundation's Spring Mixer on Wednesday, May 11th at the Petroleum Club. We also have the KGS Annual Golf Tournament coming up on Friday, June 24th. Dave Barker has another great tournament planned and we will hope for a nice, sunny, not too hot, day.

It would be truly interesting if our government, both congress and the administration, would spend our tax dollars getting our trucking fleets and urban mass transportation on the "Gas Track". Thus, keeping American Dollars in American Pockets by using American Natural Gas and employing more Americans in our industry. But, instead our government shuts down deep water drilling in the Gulf of Mexico and gets us into three wars in the Middle East. Then when the price of oil rises to over \$100 per barrel, the politicians blame our industry for high gasoline prices. And imports from unstable foreign governments like Canada flood our markets.

Why hasn't our industry already started setting up the infrastructure and the agreements necessary for the transport fleets to change over to compressed natural gas. At the same time the auto industry could then easily follow this same system. Also, why hasn't our new governor made sure that Sunflower Industries buys Kansas natural gas to be burned in their plants to generate electricity for Colorado. My guess is that natural gas can be transported cheaper to Garden City from Kansas and Oklahoma than lignite coal can be mined and transported from Wyoming. I believe this makes more sense than building wind generators and transmission lines.

Respectfully submitted,
Douglas V. Davis



KANSAS STATE UNIVERSITY
GEOLOGY
 DEPARTMENT

GRADUATE EDUCATION
for active professionals

Through: *Leading to:*
 Workshops Academic credits
 Field Trips Certificates (pending)
 Distance Education M.S. degree

With specializations in:
 Petroleum Geology
 Groundwater
 Exploration Geophysics
 Environmental Geochemistry

Information:
 KSU Continuing Education: www.dce.ksu.edu
 KSU Geology Department: www.ksu.edu/geology
 KSU Graduate School: www.ksu.edu/grad
 or e-mail George Clark, interim dept. head: <grc@ksu.edu>

ADVERTISER'S DIRECTORY

	<i>page</i>
Allied Cementing Company, Inc	25
American Energies Corp.	12
Duke Drilling	25
GeoCare Services AAPG	13
Kansas Geological Foundation	28
Kansas State University	8
Lockhart Geophysical	25
LogSleuth-MJ Systems	29
MBC Well logging	25
Murfin Drilling Company, Inc	25
PARAGON Geophysical Services, Inc	13
Professional Directory	23-24
Sunrise Oilfield Supply	25
TGS-NOPEC Geophysical Company	2
Tomcat Drilling	25
TRES Management	12
Trilobite Testing	6
Walters Digital Library	11&12
Weatherford	31
Well Enhancement Services, LLC	12

ADVERTISER'S RATES: 2011

Full Page	B&W	Color
6 issues	\$2,000	\$2,500
3 issues	\$1,080	\$1,325
1 issue	\$480	\$525
1/2 Page		
6 issues	\$1,000	\$1,500
3 issues	\$540	\$825
1 issue	\$225	\$350
1/4 Page		
6 issues	\$600	\$900
3 issues	\$325	\$525
1 issue	\$150	\$250
1/8 Page		
6 issues	\$300	\$500
3 issues	\$175	\$325
1 issue	\$75	\$185
Professional Ad (Business Card)		
6 issues	\$90	\$180

For one-time ads, call Rebecca at 316-265-8676

Wednesday
May 11th

Kansas Geological Foundation's
Spring Mixer

4:30—8:00 PM
Petroleum Club

Everyone is welcome—bring someone new
 Drinks are on us!

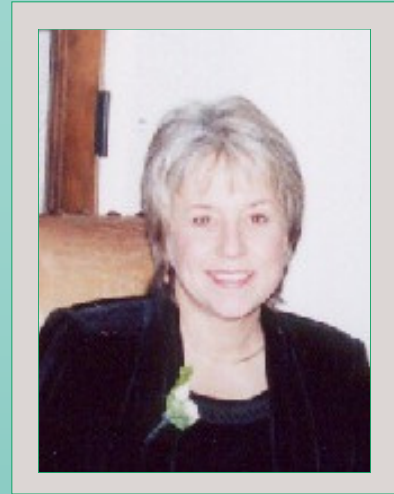


From The Manager

Dear Members,

Seems everyone is staying busy—the library has been bustling with activity. We have purchased a new Neuralog scanner to help increase our scanning time and production. We hope to have a summer employee dedicated to scanning only so we can get the boxes we have all scanned and out the door.

Staff has been working very hard to get everything caught up but have also been busy with orders so we keep plugging along with getting the new data in the files and available to you. Please remember that we keep a list on the home page of our website that tells you what wells have been released to us and we know which box they are in and can assist you in getting the data that you need.



Also, we have a set of well logs in the basement that are now in order and able to be accessed. All you need to do is fill out a request form (Rhonda will have them at the front desk) and let us know what area you are looking for and staff will retrieve and bring up for you. This data will need to be returned to a staff member for filing back as we have yet to get it entered into our database and don't want to lose track of it!

We also have a set of logs that were donated by Lane Wells and we can also access that data for you in the basement. Same procedure applies—fill out a request form.

The next event coming up is the **Foundation's Spring Mixer, Wednesday, May 11th**. Please plan to attend and bring a friend, family, all are welcome. It will be at the Petroleum Club from 4:30—8:00 PM. Then coming up in June will be the **KGS Annual Golf Tournament**. Dave Barker has planned another great tournament and this year, there is a **50" Plasma TV** that will be given away. Look for the registration flyer in this issue or if you are viewing on-line, go to the EVENTS tab for the registration form. The tournament will be Friday, June 24th at Hidden Lakes Golf Course outside Derby.

Happy Spring to All!

Respectfully submitted,

Rebecca Radford

Manager



Let Us Print Your Geo Reports
And Save Your Time For Finding More Oil & Gas
Top Quality Color Printing For Our Membership
Email your files to: tammy@kgslibrary.com

The Kansas Geological Society & Library



The
**2011 AAPG
MID-CONTINENT
SECTION MEETING**



Oklahoma City, Oklahoma
Saturday through Tuesday,
October 1st - 4th 2011

Terry Holtzrah, General Chair:

*"The Fun
Begins In Less Than
Five Months!"*

www.2011AAPGMCSSectionMeeting.org



Robert F. Walters Digital Library

The most complete source for Kansas data at your fingertips

no matter where in the world you are!



www.kgslibrary.com

316-265-8676

Search Wells

Section: AllNumber: County: Operator: Start: API Number: Dec:
 Township: Lease Name: Depth: Dec:
 Range: W: Spot: Dec: 14 found

Well No.	Spot	Location	N/S	E/W	Spud	Completion	Depth	ET HB	ET OF	ET QL	Status
15-03-0002
15-03-0061
15-03-0064
15-03-0069
15-03-0061
15-03-0011
15-03-1993
15-03-1992

Well Log Details:

COMPLETION CARD - 10G
 TIF: 300x300 dpi
 2 pages
 ID 1015744
 15-03-10002

Drill Stem Test
 1 page
 ID 1015744
 15-03-10002

Well Log: BARBARA OIL CO. PICKRELL, TOP 1, 20508 Comm. F. TEST DATA: Tunnel From 1550' To 1910', Hydraulic Mud Pressure-Initial (A) 2650#, Flow Pressure-Initial (B) 1650#, Bottom Hole Pressure-Initial (P) 1650#, Tool Open = Hr. 50 Min., Shut-In-Initial = Hr. 30 Min., Choke Surface = 5/8", Bottom Open = Pulled Cables: Type Recovery: 100% Gas cut mod.

Well Log Summary: COUNTY: COMANCHE, FIELD: SLICK, LOCATION: SEC. 10-315-16N, WELL: BRKNTKE NO. 1, COMPANY: BARBARA OIL COMPANY, STATE: KANSAS.

Check It Out: Log in as a guest - username = guest, password = guest

WOULD YOU LIKE TO INCREASE YOUR PRODUCTION AT A FRACTION OF THE COST OF HORIZONTAL DRILLING?



Well Enhancement Services, LLC is jetting laterals utilizing new technology and coiled tubing. We now have the ability to place hundreds of gallons of acid hundreds of feet away from the well bore. This allows us to not only enhance existing production but to produce reserves previously unreachable. It has established itself by repeatedly increasing production in both new and existing wells. Contact us for more information, questions or to schedule your next well with **WES**.



“Tap into success.....with WES”

Please Contact Us:

Phone: (785) 625-5155

Fax: (785) 625-4151

Field: (785) 259-4638

wesofhays@hotmail.com
Box 87, Schoenchen, KS 67667



MANAGEMENT INC.

7011 North Robinson
Oklahoma City, OK 73116

405-842-7888 Phone • 405-842-7885 Fax

www.tresmanagement.com
Email: tres@tresmanagement.com

Providing engineering, planning, and site supervision services for all phases of the oil & gas operations:
Drilling, completion, workover, and facilities

Current activity includes providing engineering and supervision on horizontal projects in the Mid-Continent, Rocky Mountain, and Gulf Coast regions.

WANTED



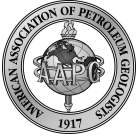
LOW BTU GAS to Buy or Treat

www.NitrogenRejectionUnit.com



American Energies Corporation

316-263-5785



Security for AAPG Members
& Their Families
Through Group Insurance

Life
Health
Dental
Disability
Auto and Homeowner
Supplemental Plans

AAPG's
GeoCare Benefits Insurance Program
P. O. Box 189
Santa Barbara, CA 93102-0819
800-337-3140
E-mail: geocarebenefits@agia.com
www.geocarebenefits.com

Kansas Geological Foundation Video / DVD Collection

The KGF has an extensive collection
of videos available for check-out
at no charge.

Only pay for shipping back.

These are ideal for classroom or
general public viewing.

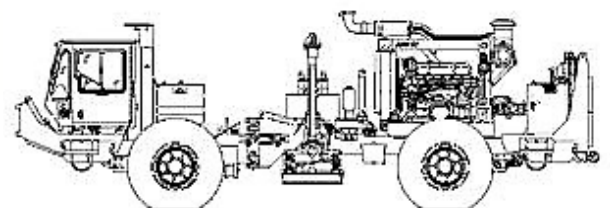
See the web for
titles & descriptions
www.kgfoundation.org

Call 316-265-8676
Ask for Janice to check out videos

Win Me At the KGS Golf Tournament



50" Plasma LG TV



~The TOP CHOICE for 3D SEISMIC~

John H Beury III ~ Pres John Aguilar ~ Op. Mgr.

PHONE (316) 636 - 5552 FAX (316) 636 - 5572

3500 N. Rock Rd., Bldg 800, Suite B
Wichita, KS 67226

paragon@paragongeo.com

2011 Kansas Oil & Gas Hall of Fame—Great Bend, Kansas

The Hall of Fame Banquet and Induction Ceremony was held at the Highland Conference Center in Great Bend on Saturday, April 16th. The speaker for the evening was Ed Cross, Executive Director of KIOGA and a KGS member.

Among the Inductees were Wayne Woolsey, Operator and member of Kansas Geological Society and Marvin Ratts, a geologist from Russell. Rod Sweetman was inducted posthumously.

In attendance were Roger McCoy, Wayne Leback, John Hastings, Dean Pattison, Kimberly Dimmick-Wells, Brian Wilhite & Marc Summervill.

There have now been 77 inductees since the honor was initiated in 1989. Included are: Clint Engstrand, Charles Steincamp, George Bruce, Robert Walters, Dick Hoover, Tom Allen, Warren Tomlinson, Charles Todd Aikins, E.K. Edminston, James Devlin, Thornton Anderson, Gerald Kathol, Scott Ritchie, Lester Wilkonson, Richard Smith, Wayne Lebsack, K.T. Woodman, Sandy Hall, Dr. Lee Gerhard, Don Hellar, J. Paul Jennings, James R. Daniels, Bob Watchous, Heber Beardmore and now Wayne Woolsey and Marvin Ratts.

We've really seen some changes

In recent years there has been considerable change in the training of Petroleum Geologists. For those of the older generations, we recall petroleum classes in universities where there was a lecture by the instructor, but no “hands on” experience.

Today we see Petroleum Geology classes where the students study various fields and then present papers on those fields. Examples of this are Larry Richardson's class at Wichita State, Dr. Tony Walton's class at University of Kansas, Dr. Hendratta Ali's class at Ft. Hays, and Dr. James Puckette's class at Oklahoma State University.

In addition to the above activity, seminars are held periodically at most universities with industry personnel participating.

There were many students attending the recent AAPG meeting in Houston.

Many universities schedule Field Trips which include visits to rotary rigs. Some older geologists didn't see a rig until they were hired by an oil company after graduation.

In addition to Larry Richardson's work as an instructor, currently teaching geology to college students at various locations are: Ernie Morrison, Doug Davis and Marjorie Noel.

There truly has been many changes for the betterment of the profession and industry.



NEWS FROM THE KANSAS GEOLOGICAL FOUNDATION



Dear Society members and supporters,

The Kansas Geological Foundation was formed just over 22 years ago by a group of geologists who wanted to provide a not-for-profit foundation for furthering the science of geology. In particular, they wanted to make available educational and geological data preservation opportunities to both the general public and the professional geologist. It is important that we step back and look at our accomplishments to see if we are still on track with our goals. This is only the end of April, but the Kansas Geological Foundation has managed to accomplish several of our goals that we have set out to do for 2011. Hopefully this issue of the Cornerstone will help apprise you with our most recent activities, the trends we see and will inform you about upcoming events and projects.

In our section on Educational News there is information on scholarships and grants awarded to geology students at universities across Kansas. The total value of those scholarships and grants during the Fall 2010 and Spring 2011 time period exceeded \$21,000. We have seen an increase in scholarship applications over the past year from many of the Kansas universities. Hopefully these awards will assist in keeping the interest of new geologists at a level that will insure the survival of our profession here in Kansas. In a recent survey conducted by the Kansas Geological Society, it is very apparent that there are not enough young geologists entering the oil industry to replace those retiring (or slowing down) in the near future.

The Kansas Geological Foundation is not only active in providing opportunities on the college level, but is also participating in elementary and secondary education in Kansas. The KGF Board elected to fund a field trip to the Hutchinson Salt Mine by Coleman Middle School in mid-May. The field trip will be lead by Mr. Kip Dawson, a science teacher at Coleman, and with our funding will allow approximately 230 sixth grade students to visit the Salt Mine. Dr. Walt Chappell, representative to the Kansas State Board of Education, joined the Board for the February meeting and informed the board of progress and concerns for Kansas regarding science education. We were very interested to learn of the different programs the Board of Education is pursuing and were appreciative of Dr. Chappell to speak to the Foundation.

Once again, the KGF Board elected to continue in its annual tradition of presenting the KGF Earth Science Teacher Award. Every year KESTA nominates an Earth Science teacher for this award. This year's award, including a monetary stipend, was awarded to Mr. Robert McKinney of Emporia High School. Mr. McKinney teaches ninth grade and has been teaching for 20 years. His dedication and creativeness to teaching was apparent during his speech at the Annual Banquet.

And last, but certainly not least, we would like to report the tremendous progress being made with respect to our efforts at data preservation. The "Accelerated Integration Project", approved by the KGF Board last year, has been going strong for the past year. It is now organized in the basement and with the help of a library employee, data can be located. The Board has once again approved to fund this project and is anticipating even more progress to be made under Ted Jochem's direction. The project will involve hiring additional help this summer and into the future to continue incorporating the data into the library in the most efficient manner. Not only does this take an incredible amount of time, it also takes money, and we need everybody to support this endeavor.

The KGF Board will be hosting our annual Spring Mixer which will be held on May 11th at the Petroleum Club. We will be providing more information on the Integration Project and how you can help with it. Our membership continues to increase and we have several new individual members as well as companies that have joined the Foundation. I urge everybody to please join us at this event, bring friends and colleagues, and I especially invite those that are not members of the Kansas Geological Foundation to come and learn more. We all hope to see you there.

Thank you for your continued support.

Beth A. Isern
KGF 2011 President

Kansas Geological Society Board Minutes

March 9, 2011 Mr. Doug Davis called the meeting to order at 11:38 A.M.

FINANCIAL REPORT/MANAGERS REPORT

- A. **Treasurer's Report**- Mrs. Noel presented the Treasurer's report for February 2011. She stated that a CD at Andover State Bank is due to mature on March 24. Several banks were contacted to find the best CD rate in the area and it was decided by the Board that Andover State Bank still had the best rate for a 2 year CD. As for the rest of the CD's, the report presented to the Board at the March meeting had the most updated and correct information as several CD statements were sent to the KGS. **Mr. Dean moved to accept the Treasurer's report as presented. Mr. Dixon seconded the motion and the motion passed unanimously.**
- B. **Manager's Report**- Mrs. Radford presented the Manager's Report for February 2011. Monthly income of the paper library and the WDL combined was \$55,572.01 and expenses were \$47,493.70, making a profit of \$8,078.31. Mrs. Radford noted that the beginning of the year had been very busy for the library with large orders and times were good. The Society has 640 members, the Library has 157 members and WDL has 185 members. It should be noted that membership appears to have decreased; however, not everyone has sent in their yearly dues.

OLD BUSINESS

- A. **Purchase of Neuralog Scanner**- Mr. Roger Martin and Mr. Tim Lauer looked at purchasing scanner equipment, most notably a Neuralog scanner. Mrs. Noel has years of experience with the Neuralog scanner and highly recommends the model with 3 speeds (slow, fast and turbo) to help ease the scanning load of the new logs yet slow enough to handle the delicate (or difficult) older logs. After the Board discussed the much needed new scanning equipment, **Mrs. Noel made the motion to purchase the Neuralog scanner, Mr. Scribner seconded the motion and the motion passed unanimously.**

NEW BUSINESS

- A. **Career Days**- On March 11, WSU planned on hosting a Career Day with WSU students. Five companies have responded so far. It has been mentioned that we could possibly have a statewide career fair in Wichita at some point. The idea is to get companies state-wide, and companies that are located out of state but operate in Kansas, together and invite all geology students from the state universities. Further discussion is needed.
- B. **Mid-Continent AAPG Meeting**- 2011 annual meeting is in October and the deadline for paper submissions is April 1. It should be noted that Wichita will once again host the Mid-Continent AAPG meeting in September 2013.
- C. **"Members Only" Page**- There has been some loose discussion on the need for a "members only" page on the KGS website for companies and individuals to look for employment. More discussion to follow to determine what should be available under that specific web page.

ADJOURNMENT- *Mr. Saenger moved to adjourn the meeting at 1:55 p.m. Mr. Scribner seconded the motion and the motion passed unanimously.*

Respectfully submitted, Marjorie Noel (Treasurer), in the absence of Secretary Robert Milford

April 14, 2011 Mr. Davis called the meeting to order at 11:45 a.m.

FINANCIAL REPORT/MANAGERS REPORT

- A. **Treasurer's Report**- Mrs. Noel presented us with the Treasurer's report for March 2011. The earliest a CD will be maturing is April 26, 2011 at Kanza State Bank. The CD will need to be moved to another bank because we will exceed the Federal Deposit Insurance limit at Kanza State Bank. Southwest National Bank currently has the best 1 & 2 year rates but she will check Fidelity Bank for their "Special" term rates before reinvesting in a new CD. Mrs. Noel received a letter from Securities America concerning the December 2010 decrease in value on their Money Market fund. The decrease is related to the bankruptcy of Lehman Brothers and may be recovered in the future. **Mr. Dean moved to accept the Treasurer's report as presented. Mr. Scribner seconded the motion and the motion passed unanimously.**
- B. **Manager's Report**- Mrs. Radford presented the Manager's Report for March 2011. Monthly income was \$89,083.50 and expenses were \$57,092.42, making the profit \$31,991.08 for the month. An error was noted in the "YTD Net" amount on the Manager's Report and will be corrected.

OLD BUSINESS

Setting up web page for students/companies to connect & Members Only page - Mrs. Radford stated that the Kansas Geological Survey programmers have been working on higher priority items and there was further discussion on how the website should be setup and work.

NEW BUSINESS

Expenses for the KGS President to attend the AAPG Annual convention - Mrs. Noel motioned for KGS to pay for Mr. Davis's registration and travel expenses related to attending the AAPG Annual Convention. Mr. Dean seconded the motion and the motion passed unanimously.

Backlog of Well Information from the KCC to be Scanned - Mrs. Radford stated that there are approximately 39 boxes of well information (electric logs, geological reports, drill stem test, etc.) from the KCC that needs to be scanned. She exploring options on getting the information scanned, including a partnership with the Kansas Geological Survey.

ADJOURNMENT- Mrs. Noel motioned to adjourn the meeting at 1:19 p.m. and the motion passed unanimously.

Respectfully submitted, Robert Milford - Secretary

You Can Now Log Into the Walters Digital Library without belonging

Use guest / guest for username & password

This will allow you to see what's in our database

You won't be able to download of course but you can see if we have what you are looking for.

You might find this helpful when placing an order with the KGS Paper Library.

www.kgslibrary.com

Kansas Geological Society & Library | Home - Mozilla Firefox

File Edit View History Bookmarks Tools Help

http://www.kgslibrary.com/index.cfm

Most Visited My Yahoo! WDL Robert F. Walters Digi... Gmail - Inbox (1) - kan... Bloomberg.com: Ener... Mozilla Firefox Start P... Google The Kansas Geolog

Bloomberg.com: Energy Prices My Yahoo! Kansas Geological Society & Libr...

KANSAS GEOLOGICAL SOCIETY **Kansas Geological Society & Library** **Founded in 1923**

Sign in to Robert F. Walters Digital Geological Library

guest guest Sign In

User Name Password

Home About Officers Bulletins Events Tech Talks KCC Boxes & Logs Membership Links Contact

Library

The Kansas Geological Society Library has the most complete collection of oil and gas well data for the State of Kansas and surrounding areas. Donated by industry since 1923.

Robert F. Walters Digital Geological Library

Version 1.1

Stitched TIFF images are now legible in Petra

FYI

Are you aware??????

We keep a list of all the new data coming from the KCC to our Paper Library in an Excel Spreadsheet.

On the Home Page of www.kgslibrary.com

You will find a link "KCC Boxes & Logs"

If you click on this link, you will be able to download the list of new well data received.

If you do not find it in the file cabinets, please ask staff and they will assist you in locating the new data in our boxes.

Some of this data has not been entered yet, and we must keep track of it so

PLEASE — ALWAYS ASK STAFF TO HELP YOU.

1. Alaska Oil and Gas Opportunities 2011 State of Alaska, Department of Natural Resources
2. Alaska Fear Factors Petroleum News
All that you ever need to know about exploration in Alaska
3. When Getting the Right Results Matters Roxar
Multiple Applications for handling all types of data
4. “Our Name Says It All” The Mudlogging Company
This is a promotional Video for mudlogging along the Gulf Coast.
5. A History of Geothermal Energy R & D in the U.S. U. S. Dept of Energy
All you ever wanted to know about Geothermal Energy
6. Newfoundland – Labrador Natural Resources Dept. of Natural Resources
Petroleum Resources Development
7. Digital Formation Product Digital Formation Company
Services provided by this company for numerous exploration data
8. HDS – Visual Petrophysical Tool HDS
This company provides software and training courses to companies
9. Reservoir Solutions Ryder Scott Petroleum Consultants
Company provides soft ware for solutions to gas material balance to log analysis
10. Nova Scotia Nova Scotia Dept. of Energy
A look at Nova Scotia’s Energy Opportunities
11. After a Century—Revised Paleogene Coal Stratigraphy, Correlations, and Deposition,
Powder River Basin, Wyoming and Montana USGS
12. Petroleum systems and Geologic Assessment of Oil and Gas in the Bighorn Basin Province, Wyoming and Montana
USGS
13. Oil Shale and Nahcoloite Resources of the Piceance Basin, Colorado USGS
14. Oil Shale Resources of the Uinta Basin, Utah and Colorado USGS
15. Total Petroleum Systems and Geologic Assessmnt of Oil and Gas Resources in the Powder RiverBasin Province,
Wyoming and Montana USGS
16. The Dynamic Earth NASA
NASA Observes Our Ever-Changing Planet

Call Janice at 316-265-8676 to check out videos

The Kansas Geological Foundation has a Speaker’s Bureau which provides speakers to organization, schools, etc. If you would have material you would like to present as a member of the Speaker’s Bureau, please contact Bob Cowdery at 316-267-9030 or sbc@southwind.net

Report on Annual Meeting of the American Association of Petroleum Geologists – Houston Texas, April 10 – 14

This was a well attended meeting with over 7000 in attendance and 200 plus exhibits.

House of Delegates – All of the Kansas Geological Society's allocated delegates were in attendance: Doug Davis, Ernie Morrison and Bob Cowdery. A number of amendments to the By-laws and Constitution, which made the wording "gender neutral" were passed. An amendment which would have created seven categories of membership was defeated when it did not receive the necessary 2/3rds of the vote.

Visiting Geoscientist Program – Visits both domestic and international only numbered 39 since last June which was a very small number compared to previous years. There were no visits in the Mid-Continent Section during this period.

Membership – Membership continues to increase particularly in international areas. There is a very large student membership in Egypt and Nigeria. A number of proposals to increase membership were presented.

Mid-Continent Section – Ernie Morrison is the Vice President of the Section and will become President prior to the 2013 meeting in Wichita. Money was voted to help with finances for the 2011 meeting and also \$2000 each for student scholarships to the Oklahoma City Geological Society and the Nebraska Geological Society. It has been recommended to the Kansas Geological Foundation that a proposal be made at the meeting in Long Beach next year for money to fund scholarships in the KGS area.

Since neither the KGS nor the Kansas Geological Survey had booths at meeting, material concerning the KGS, The Robert F. Walters Digital Library and the Kansas Geological Foundation was left at the University of Kansas both for distribution.



**Everyone's Welcome
At the
KGF's Annual Spring Mixer!**

**Wednesday, May 11th
4:30 PM—8:00 PM
At the Petroleum Club**

Earth Day – April 21 – Sedgwick County Zoo

A joint booth of the Kansas Geological Society, Kansas Geological Foundation and the Kansas Geological Survey was manned from 9:00 AM until 2:00 PM by Bob Cowdery, Mike Dealy, Chuck Brewer, Kent Matson and Tom Hansen.

This event was attended by thousands of students and adults including many teachers. The final count was 5,954 attending with 113 exhibitors. The Kansas Geological Survey distributed books, marks, post cards portraying the geology of Kansas, a NASA DVD and other items. The Kansas Geological Society and the Kansas Geological Foundation distributed rock kits, AGI packets, Downtown Walking Tours (prepared by Larry Skelton) brochure, a list of CD's DVD's and Videotapes primarily to teachers. Pencils were also distributed to students attending.

This was an excellent opportunity to present to the public the services provided by the geologic organizations and it resulted in a very successful accomplished operation.



What better attraction than an active volcano to get the kids interested in geology!

GEO-SCENES

WSU Geology Spring Break Trip To Ouachita and Appalachian Mountains of Arkansas and Tennessee



WSU students examining outcropping of Cretaceous carbonatite dike in the Magnet Cove Igneous Complex, near Hot Springs, Arkansas



Students examining folded turbidite deposits in the Pennsylvanian Atoka Formation, Hot Springs, Arkansas

Continued on page 22



Geology master degree student Clark Gilbert, pointing out cleavage directions and folded bedding in the Precambrian Walden Creek Group. Ocoee River Gorge, west of Ducktown, TN.

Hiwassee Mine in Ducktown, TN. This is the location of the first discovery of copper in 1843 and later the first mine in the area. Ducktown later became infamous for its early open roasting method of treating the copper and iron ore, which created acid rain. This process killed much of the vegetation in the immediate area.



Undergraduate student, Tyler Foster, taking a dip measurement on Precambrian metasilstones in the Great Smoky Mountains National Park.

PROFESSIONAL DIRECTORY

Kirk Rundle
Consulting Geophysicist
 3D Seismic Design, Acquisition to Processing QC,
 Interpretation and Analysis, Subsurface Integration
 7340 W. 21st. N., Ste. 100
 Wichita, Kansas 67205

Office: 316-721-1421 Fax: 316-721-1843
 Email: kirk@rundlegeo.com

ROGER L. MARTIN
Independent Petroleum Geologist
 200 E 1st St, Ste 405, Wichita, KS 67202

Office 316-833-2722 Cell: 316-250-6970
 KS Field Cell: 316-655-1227
 Fax: 316-425-3829
 Email: rogermartingeo@yahoo.com



GeoCertified, LLC
 Professional Geological Services
 Hydrocarbon Detectors and Geologist Onsite 24/7

Phone: (913) 441-2311 • Cell: (913) 544-7527
 www.geocertified.com

ALFRED JAMES III
Petroleum Geologist
 Kansas - Colorado - Utah

200 W. Douglas, Ste. 525, Wichita, Kansas 67202

SIPES # 1111
 Office (316) 267-7592
 alfred.james55@yahoo.com

Tel.: (972) 712-9036
 Fax: (972) 712-0258
 Cell: (214) 223-1784

LANG J. FUQUA
 Certified Petroleum Geologist

4201 Tanglewood Ln.
 Frisco, Texas 75035

M. Bradford Rine
Honorary Life Member—Kansas Geological Society

Licensed Geologist—KS. #204
 Registered Professional Geologist—Wyo. # 189
 Certified Geologist—A.A.P.G. # 2647
 S.I.P.E.S. # 1584 S.P.E. #109833-4

PROSPECT EVALUATION • PROSPECT GENERATION
 WELLSITE SUPERVISION • EXPERT TESTIMONY • OPERATIONS
 PROPERTY EVALUATION • RESERVOIR STUDIES
 DRLG./COMP. CONSULTATION

Suite 415 Office: (316) 262-5418
 100 S. Main Fax: (316) 264-1328
 Wichita, KS 67202 Cell: (316) 250-5941

WESLEY D. HANSEN
Consulting Geologist
 Well site Supervision
 Geologic Studies
 212 N. Market, Ste 257
 Wichita, Kansas 67202
 Off: (316) 263-7313
 Mobile: (316) 772-6188



Paul Gunzelman
 President/Geologist

Wichita, Kansas 316.634.6026
 email p.gun@sbcglobal.net



KEVIN L. KESSLER
 INDEPENDENT/CONSULTING PETROLEUM GEOLOGIST

WELLSITE SUPERVISION • GEOLOGIC RESEARCH
 OIL & GAS PROSPECTS
 KANSAS & EASTERN COLORADO

MAILING ADDRESS PHONE
 1199 N. PONDEROSA RD. RES.: (316) 522-7338
 BELLE PLAINE, KS 67013 MOBILE: (316) 706-6636
 EMAIL: KKESSLER1199@AOL.COM

ROBERT J. GUTRU
Geologist

300 Farmers & Bankers Bldg.
 200 East First Street
 Wichita, Kansas 67202
 Off: (316) 265-3402

KGJ ENTERPRISES

Contract Oil & Gas Accounting &
 Office Management

Kathryn G. James, MBA (316) 775-0954
 4278 SW 100th ST. (316) 250-5989
 Augusta, KS 67010 kgjames@onemain.com

MELLAND ENGINEERING, INC.
Petroleum Engineering & Geological Consulting

James E. Melland, P.E., P.G.
 President
 Office: (620) 241-4621 Fax: (620) 241-2621
 jamesm@mellandengineering.com
 www.mellandengineering.com

P.O. Box 841, McPherson, KS 67460

Blue Ribbon Drilling, LLC

PO Box 279, Dewey, OK 74029

Phone and Fax: 918-534-2322

John's Cell Phone: 918-440-9639

Larry's Cell Phone: 918-440-9638

Jeff's Cell Phone: 918-440-9647

Email: johnroutree@bratco-operating.com

PLAINSMEN LAND LLC

Cash available for lease acquisition
Supporting Oil & Gas Prospects

Dan Earl Duggan

817.347.9300

danearl@dxwells.com

Steve Meese

405.820.2442

smeese3105@yahoo.com



**Kansas Geological Foundation
Invites you to attend the**

Spring Mixer

Wednesday, May 11th

4:30 PM — 8:00 PM

Petroleum Club

**All are welcome!
You don't have to be a member**

**Spring into action
and join the
Kansas
Geological
Foundation**

Call 316-265-8676

**Or send checks to:
Kansas Geological Foundation
212 N. Market, Ste. 100
Wichita, KS 67202**

Free To Good Home (or office)

Geophysical Journals
AAPG Bulletins
Journal of Sedimentary Petrology
Shale Shakers
GSA Bulletins

The Following Are For Sale

The Kansas Geological Foundation is offering electric logs on microfiche for sale. This data is from 9 western states. The microfiche will be sold as is, in bulk, by state (no cherry picking). Prices are proportionate to the number of fiche available.

Prices are firm, you haul or pay shipping

Utah (~20,000 logs) - \$200.00
Colorado—\$25.00
S. Dakota—\$50.00
New Mexico—\$50.00
Idaho—\$25.00
Arizona—\$25.00
Oklahoma—\$25.00

WESTERN KANSAS
SOUTHERN NEBRASKA



EASTERN COLORADO
OKLAHOMA & TEXAS PANHANDLES

10 Drilling Rigs

10 Well Service Rigs & Roustabout Services

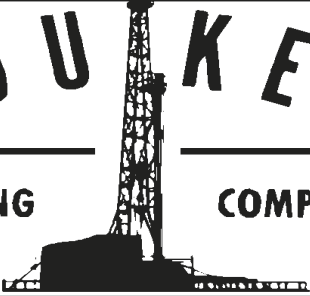
For contract information, please contact:
Blaine Miller / Drilling Department
316-858-8607 (Direct) or 316-267-3241

For contract information, please contact:
Alan Hays, Well Service Sprvsr.
785-421-2103 or 785-567-8739 (cell)

250 N. Water #300—Wichita, KS 67202

East Highway 24—Hill City, KS 67642

DUKE



DRILLING COMPANY

ROTARY DRILLING CONTRACTOR

620 Hubbard PO Box 823
Great Bend, KS 67530
Phone 620-793-8366

100 S. Main, Ste. 410
Wichita, KS 67202
Phone 316-267-1331
Fax 316-267-5180



Tomcat Drilling

3 Rotary Rigs - Rotary Drilling Contractor
Southwest Kansas • Oklahoma & Texas Panhandles

Tim Sanders 316-262-8554 phone
316-259-1652 Cell
tjsanders@tomcat.kscoxmail.com

100 S. Main, Suite 508
Wichita, KS 67202

Great Bend (620) 793-5861 Ness City (785) 798-3843 Medicine Lodge (620) 886-5926



Acidizing Available at Medicine Lodge District

Russell (785) 483-2627 Oakley (785) 672-3452

Lockhart Geophysical Company

Call (303) 592-5220 FAX (303) 592-5225
Or E-mail lockden@xpert.net

2D & 3D Seismic Acquisition
Vibroseis Specialists




JAPEX GDAPS-4 Distributed System

We'll give you seismic excellence

MBC

WELL LOGGING & LEASING
UNMANNED GAS DETECTORS
MUD LOGGING
CERTIFIED INSTRUMENT TECH
SERVING THE KAN-O-TEC AREA SINCE 1990

AUSTIN GARNER MARLA GARNER
24-HOUR PHONE (620) 873-2953
MEADE, KANSAS



STORES

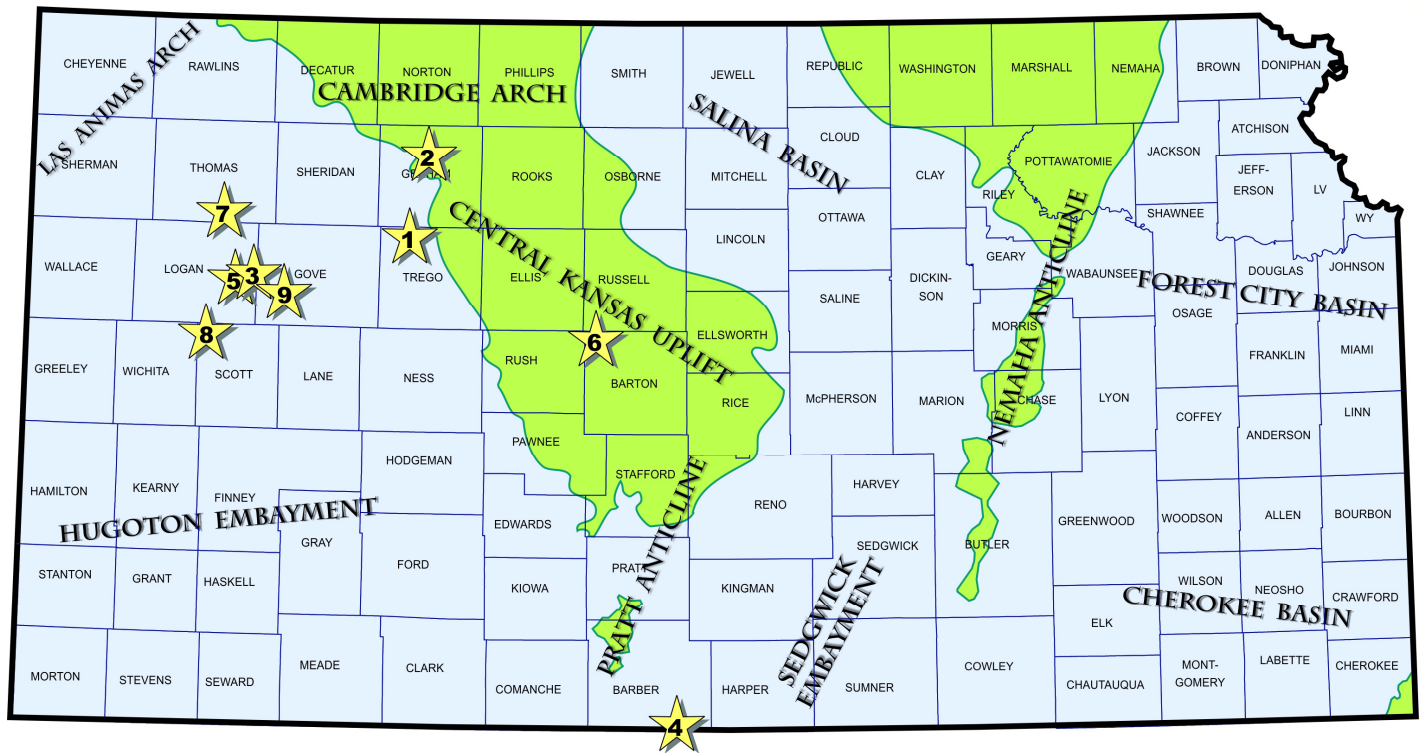
Ness City, KS 800-589-5733
El Dorado, KS 316-321-9323
Garden City, KS 877-976-1700
Spivey, KS 316-532-5261
McCook, NE 308-345-1542

FULL LINE SUPPLY STORE
With Pump Shop
Offering New & Used
Pipe, Equip. & Fittings
Employee Owned

SALES OFFICES

Wichita, KS 800-777-7672
Great Bend, KS 316-792-3130
Mob: 316-786-4255

New Office
Hugoton, KS 620-428-6604



(1) **Coral Production Corporation**, Denver (CO), is pumping 45 barrels of oil and 15 barrels of water per day at a new unnamed pool discovery in **Trego** County. Discovery was made at the Millard No. 25-1, spotted in approximately SW SE SE in section 25- T11s-R24W, about three miles northwest of Wakeeney, Kansas. The new oil strike lies nearly three-quarters mile north of production in the Voda Southeast oil field which has produced oil from the Lansing-Kansas City limestones since 1974. Operator found four separate zones in the LKC producing from perforated depths between 3,931 to 3,976 feet. The 4,224 foot deep well was put on pump on January 31, 2011.

(2) **Black Diamond Oil Company**, Hays (KS), has completed its Roberts No. 1 in **Graham** County for 30 barrels of oil and 50 barrels of water per day. The well successfully revives previously abandoned oil production in the J.A.B. oil field which was discovered in 1962 by Glickman Oil and Houston Petroleum. Production in the field was abandoned in 1970. The Roberts well topped the Lansing formation at 3,700 (-1259). Pay comes from mainly selective limited-entry perforations shot from 3,740 through 3,890 feet. Rotary total depth was reached at 3,975 feet. Wellsite is located in the SW NW of section 17- T7s- R23W, almost six miles northwest of Hill City, Kansas.

(3) **Palomino Petroleum**, Newton (KS), has recovered good shows of oil from a Drill Stem Test taken over the Fort Scott and Cherokee (Johnson Zone) formations at their No. 1 Stoll - Hughes, located in SE SW of section 19- T13s- R32W, **Logan** County. The wildcat well recovered oil shows from a depth of 4,467 to 4,613 feet. Operator focused exploration on site located nearly two miles southwest of closest production in the Stratford West field where the Lansing-Kansas City, Marmaton and Cherokee formations have produced oil since 2007. WW Drilling tools were used to bottom the well at a loggers total depth of 4,746 feet. Operator has

set pipe and is currently evaluating for completion. The well is situated fourteen and one half miles southwest of Oakley, Kansas.

(4) **SandRidge Exploration & Production LLC**, Oklahoma City (OK), has completed its first horizontal well, the No. 1-H Schrock 1, in **Barber** County. The wildcat well is producing an unknown amount of oil from the Mississippian formation. Vertical wellbore was drilled to an estimated depth of around 4,500 feet before kicking off laterally in the zone to drill hole to a true measured depth of 9,342. Well surface location is spotted in the C S/2 S/2 SW SW in section 1- T35s- R11W. Bottom hole location stretches in a due northerly direction to approximately C N/2 NW NW of the same section. Production comes from 5,380 to 9,342 feet measured depth. The unnamed pool discovery lies nearly two miles from the production in the Mayberry (Mississippian) oil and gas field, just outside the northeastern city limits of Kiowa, Kansas.

(5) **Grand Mesa Operating Company**, Wichita (KS), has discovered Cherokee oil deposits one and one-quarter miles north of the relatively new High Hat East oil field in **Logan** County. The new unnamed pool opener began pumping oil from the Johnson Zone formation at an undisclosed rate on January 21, 2011. Murfin Drilling tools drilled the well to a total depth of 4,670 feet. Grand Mesa established the High Hat East field in September last year with the completion of its 1-3 M. Andersen in section 3- T13s- R32W. The well produced oil from the Lansing-Kansas City, Marmaton and Cherokee formations. Activity is situated about ten miles south of Oakley, Kansas.

(6) **Samuel Gary Jr. & Associates**, Denver (CO), is producing an unknown amount of oil from the Lansing-Kansas City and Basal Pennsylvanian zones at the No. 1-8 Funk, located in the W/2 NW of section 8- T16s- R15W, **Barton** County. The 3,679-foot

deep wildcat discovery was completed on January 20, 2011 about eleven and one-half miles northwest of Olmitz townsite. Site lies three-quarters mile from nearest producing wells in the recently established Pleasant Dale East field with similar pay.

(7) **O'Brien Resources, LLC**, Shreveport (LA), is pumping 50 barrels of oil and an equal amount of water at the No. 1 Myers - Kob (12) well in **Thomas** County. Spotted in approximately SW SE SW SW in section 12- T10s- R33W, the well is producing crude from Lansing-Kansas City perforations from 4,220 to 4,278 ft. overall. The 4,770 ft. deep well is a northeast offset to O'Brien's No. 14-1 Krug in the northeast corner of section 14, which was completed in January last year for 80 barrels of oil per day from LKC and Cherokee zones and established the Spica field. Field area lies eight miles northeast of Monument, Kansas.

(8) **Shakespeare Oil Company**, Salem (IL), has a new unnamed pool discovery in **Scott** County. The Janzen No. 1-16, approximately NW SE NW NW in section 16- T16s- R34W, was completed on pump March 8, 2011 at an undisclosed rate of production. The well found new oil reservoir over two miles northwest of the Radnor field where Marmaton and Cherokee oil is being produced. Shakespeare discovered the Radnor field in October last year. The new Janzen discovery is producing from the Johnson Zone in the Cherokee. The well was bottomed at 4,880 ft. twelve miles northwest of Modoc, Kansas.

(9) **Nor-West Kansas Oil, LLC**, Wakeeney (KS), reports a new Mississippian oil discovery in **Gove** County with the completion of the Rudzik No. 15-1. The wildcat well was drilled nearly two miles northeast of the Butterfield - Overland NE field (Marmaton oil) in approximately the NE NW NW SE in section 15- T14s- R30W, about eleven miles southwest of Gove, Kansas. WW Drilling tools drilled the well to a total depth around 4,600 ft. The new field has not been named.

NEW KANSAS GEOLOGICAL SOCIETY PUBLICATION

New Plays and Ways Kansas Oil & Gas Fields, Vol. VI

**In cooperation with Kansas Geological Survey
And compiled by Dan Merriam**

This volume covers 11 oil & gas field studies with emphasis on new techniques and significant fields in Kansas.

This volume is printed in full color—Price: \$40.00 + Postage

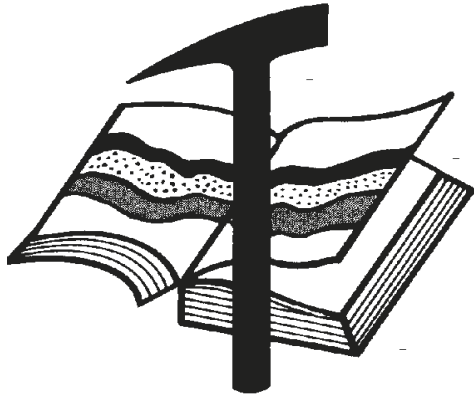
New Plays

- ◆ Looking For New Oil in Old Places: the Nemaha Overthrust Belt, by Lee C. Gerhard
- ◆ Hugoton Revisited: A new Look at an Old Field, by Martin K. Dubois
- ◆ Niobrara Chalk Gas Fields Play in Northwestern Kansas, by K. David Newell and W. Lynn Watney
- ◆ Kansas Coalbed Methane Play, by K. David Newell and Rolland J. Yoakum
- ◆ Cherokee Sand Discoveries in the Butterfield Trail, Maddie, Karis, Karis North, Witthuhn Northwest and Butterfield Fields in Eastern Trego County, by Beth.A. Isern and Larry Friend

New Ways (Field Studies)

- ◆ Old oil and new gas production at the School Creek North Field in Cowley County, Kansas by S.J. Mazzulo
- ◆ Slick-Carson Oil Field, Cowley County, Kansas, by Dan Merriam
- ◆ A New Look at the Davis Ranch and Davis Ranch Northeast oil fields, by Kyle E. Gorynski & Anthony W. Walton
- ◆ Herd Viola Pool Trend Comanche County Kansas, by Larry J. Richardson
- ◆ A History of the Fairport Field in Russell County Kansas, 120 Mile Step-Out, by Ernie Morrison
- ◆ Sigle North oil field in Osborne County, by Mike Dealy

**Call to order: 316-265-8676
Or email: manager@kgslibrary.com**



Kansas Geological Foundation

Web Site: www.kgfoundation.org

**212 North Market
Wichita, Kansas 67202**

A not-for-profit educational and scientific corporation

GOALS:

- promote geology and earth science
- preserve geological records
- establish memorials and endowments
- support field trips and seminars
- financial aid and grants to students

PLEASE HELP SUPPORT THE FOUNDATION

Kansas Geological Foundation Services

The Kansas Geological Foundation provides the following services as a part of the organization's commitment to educate the public regarding earth science.

Speaker's Bureau

A list of speakers available to talk about various aspects of geology may be obtained by contacting Janice Bright at the KGS Library, 265-8676. This service is free to the public.

DVD/Videotape Library

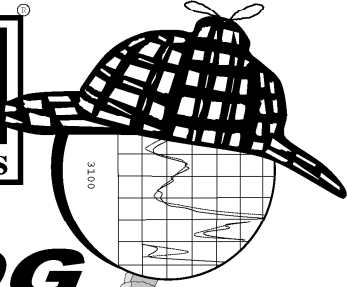
The KGF maintains a DVD & videotape library focused primarily on the various fields of earth science. These tapes may be checked out without charge by the public. To obtain a list of tapes, please contact the KGS Library, 212 N. Market, Ste. 100, Wichita, KS 67202, or call Janice Bright at 265-8676.

The Kansas Geological Foundation was founded in March, 1989 as a not-for-profit corporation under the guidelines of section 501(c)(3) of the tax code to provide individuals and corporations the opportunity to further the science of geology. It is dedicated to providing charitable, scientific, literary and educational opportunities in the field of geology for the professional geologist as well as the general public.

KGF can receive in-kind donations through which the donor may receive a tax deduction. Of equal importance, the KGF provides the financial resources to sort, process and file this data at the KGS library. If you have a donation to make, please contact the KGF at 265-8676.

Your tax-deductible membership donation helps to defray the cost of processing donations and to support public education programs about the science of geology. Annual membership begins at \$50.00 per year. Donations of \$100.00 or more are encouraged through the following clubs:

Century Club	\$ 100 to \$ 499
\$500 Club	\$ 500 to \$ 999
Millennium Club	\$1000 to \$5000
President's Club	\$5000 and over



LOG
Sleuth
2000
AND RASTER IMAGE
WELL LOGS

OVER
5 MILLION
LOGS
AVAILABLE

1-800-310-6451

SALES@MJLOGS.COM

CALGARY • DENVER

U.S.A.
LOGS FOR:

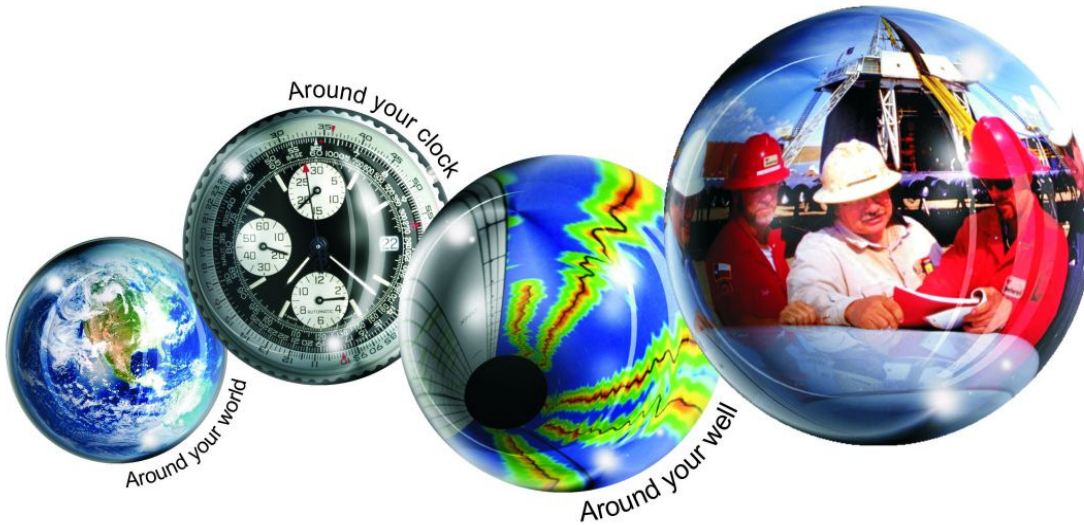
ALABAMA
ALASKA
ARKANSAS
ARIZONA
CALIFORNIA
COLORADO
FLORIDA
IDAHO
ILLINOIS
INDIANA
KANSAS
LOUISIANA
MICHIGAN
MISSOURI
MISSISSIPPI
MONTANA
NEBRASKA
NEVADA
NEW MEXICO
NORTH DAKOTA
OKLAHOMA
OREGON
SOUTH DAKOTA
TEXAS
UTAH
WASHINGTON
WEST VIRGINIA
WYOMING

CANADIAN
LOGS FOR:

ALBERTA
BRITISH COLUMBIA
SASKATCHEWAN
MANITOBA
FEDERAL AREAS

Kansas Geological Foundation Memorials

KGS Member	Date Deceased	Memorial Established	KGS Member	Date Deceased	Memorial Established
Dan Bowles	09/89	1990	Ralph W. Ruuwe	09/00	2000
John Brewer	10/89	1990	Robert L. Slamal	02/01	2001
George Bruce	08/89	1990	Jerold E. Jespersen	06/01	2001
Robert Gebhart	01/90	1990	William A. Sladek	06/01	2001
Ray Anderson, Jr.	11/90	1990	Harlan B. Dixon	06/01	2001
Harold McNeil	03/91	1991	Edward B. Donnelly	08/01	2001
Millard W. Smith	08/91	1991	Richard P. Nixon	02/02	2002
Clinton Engstrand	09/91	1991	Robert W. Frensley	12/01	2002
M.F. "Ted" Bear	10/91	1991	Gerald W. Zorger	01/02	2002
James & Kathryn Gould	11/91	1991	Don L. Calvin	03/02	2002
E. Gail Carpenter	06/91	1993	Claud Sheats	02/02	2002
Benton Brooks	09/92	1992	Merle Britting	2002	2002
Robert C. Armstrong	01/93	1993	Harold Trapp	11/02	2002
Nancy Lorenz	02/93	1993	Donald M. Brown	11/02	2003
Norman R. Stewart	07/93	1993	Elwyn Nagel	03/03	2003
Robert W. Watchous	12/93	1993	Robert Noll	09/03	2003
J. George Klein	07/94	1994	Benny Singleton	09/03	2003
Harold C.J. Terhune	01/95	1995	Jay Dirks	2003	2003
Carl Todd	01/95	1995	J. Mark Richardson	02/04	2004
Don R. Pate	03/95	1995	John "Jack" Barwick	02/01	2004
R. James Gear	05/95	1995	Richard Roby	03/04	2004
Vernon Hess	06/95	1995	Ruth Bell Steinberg	2004	2004
E. K. Edmiston	06/95	1995	Gordon Keen	03/04	2004
Jack Rine	07/95	1995	Lloyd Tarrant	05/04	2004
Lee Cornell	08/95	1995	Robert J. "Rob" Dietterich	08/96	2004
John Graves	10/95	1995	Mervyn Mace	12/04	2004
Wilson Rains	10/95	1995	Donald Hoy Smith	04/05	2005
Heber Beardmore, Jr.	09/96	1996	Richard M. Foley	06/05	2005
Elmer "Lucky" Opfer	12/96	1996	Wayne Brinegar	06/05	2005
Raymond M. Goodin	01/97	1997	Charles B. Moore	09/96	2005
Donald F. Moore	10/92	1997	Jack Heathman	05/06	2006
Gerald J. Kathol	03/97	1997	Charles Kaiser	09/06	2006
James D. Davies	08/88	1997	Rod Sweetman	08/06	2006
R. Kenneth Smith	04/97	1997	Karl Becker	10/06	2006
Robert L. Dilts	05/97	1997	Frank Hamlin	10/06	2006
Delmer L. Powers	06/72	1997	Marvin Douglas	12/06	2006
Gene Falkowski	11/97	1997	Robert W. Hammond	04/07	2007
Arthur (Bill) Jacques	01/98	1998	Eldon Frazey	04/07	2007
Bus Woods	01/98	1998	Pete Amstutz	05/07	2007
Frank M. Brooks	03/98	1998	Charles Spradlin	05/07	2007
Robert F. Walters	04/98	1998	Donald R. "Bob" Douglass	09/07	2007
Stephen Powell	04/98	1998	Vincent Hiebsch	11/07	2007
Deane Jirrels	05/98	1998	Glen C. Thrasher	03/08	2008
William G. Iversen	07/98	1998	Peg Walters	06/08	2008
Ann E. Watchous	08/98	1998	Theodore "Ted" Sandberg	07/08	2008
W.R. "Bill" Murfin	09/98	1998	James Ralstin	11/08	2008
Donald L. Hellar	11/98	1998	Earl Brandt	04/09	2009
Joseph E. Rakaskas	01/99	1999	Walter DeLozier	05/09	2009
Charles W. Steincamp	02/99	1999	Donald D. Strong	01/10	2010
Robert and Betty Glover	10/96	1998	John Stone	02/10	2010
Howard E. Schwerdtfeger	11/98	1999	Craig Caulk	03/10	2010
W. W. "Brick" Wakefield	03/99	1999	Joseph E. Moreland, Jr.	03/10	2010
V. Richard Hoover	01/00	2000	Gene Garmon	03/10	2010
Warren E. Tomlinson	01/00	2000	James F. Dilts	05/10	2010
James A. Morris	01/00	2000	Jerry Pike	05/10	2010
Eric H. Jager	03/00	2000	Donald Hollar	06/10	2010
Kenneth W. Johnson	03/00	2000	Delbert Costa	08/10	2010
Dean C. Schaake	03/00	2000	John Tanner	08/10	2010
Fred S. Lillibridge	05/00	2000	William (Bill) Owen	09/10	2010
Jerry A. Langrehr	07/00	2000	Harold (Hal) Brown	10/10	2010
Clark A. Roach	07/00	2000	Edmund G. Lorenz	11/10	2010
Floyd W. "Bud" Mallonee	10/00	2000			



All Around You

Weatherford has always been driven by your needs.

Now, with the addition of Precision Energy Services we're continuing to build a world of skills, services and technologies that revolve – and evolve – around you.

The result?

An expanded global network of 25,000 people, 730 service bases and 87 manufacturing facilities in 100 countries.

This increased local knowledge and service is there to support you anywhere, anytime. From midday in the Middle East to midnight in the middle of nowhere.

And with greatly strengthened capabilities in the critical evaluation skills of directional drilling and wireline logging, we can do even more to improve the profitability and productivity of your wells.

To see how our sphere of services can work for you, visit www.weatherford.com or contact either your Weatherford or former Precision Energy Services representative.

Drilling | Evaluation | Completion | Production | Intervention

© 2006 Weatherford International Ltd. All rights reserved. Incorporates proprietary and patented Weatherford technology.


CHANGE SERVICE REQUESTED

KGS BULLETIN
 May—June 2011

May 2011

Sun	Mon	Tue	Wed	Thu	Fri	Sat
1	2	3 Tech Talk	4	5	6	7
8	9 Tech Talk	10 KGS Board Mtg.	11 KGF's Spring Mixer	12	13	14
15	16	17 Tech Talk	18	19	20	21
22	23	24 Tech Talk	25	26	27	28
29	30 Memorial Day—Library Closed	31				

June 2011

Sun	Mon	Tue	Wed	Thu	Fri	Sat
			1	2	3	4
5	6	7	8	9	10	11
12	13	14	15	16	17	18
19	20	21	22	23	24 KGS Golf 	25
26	27	28	29	30		